

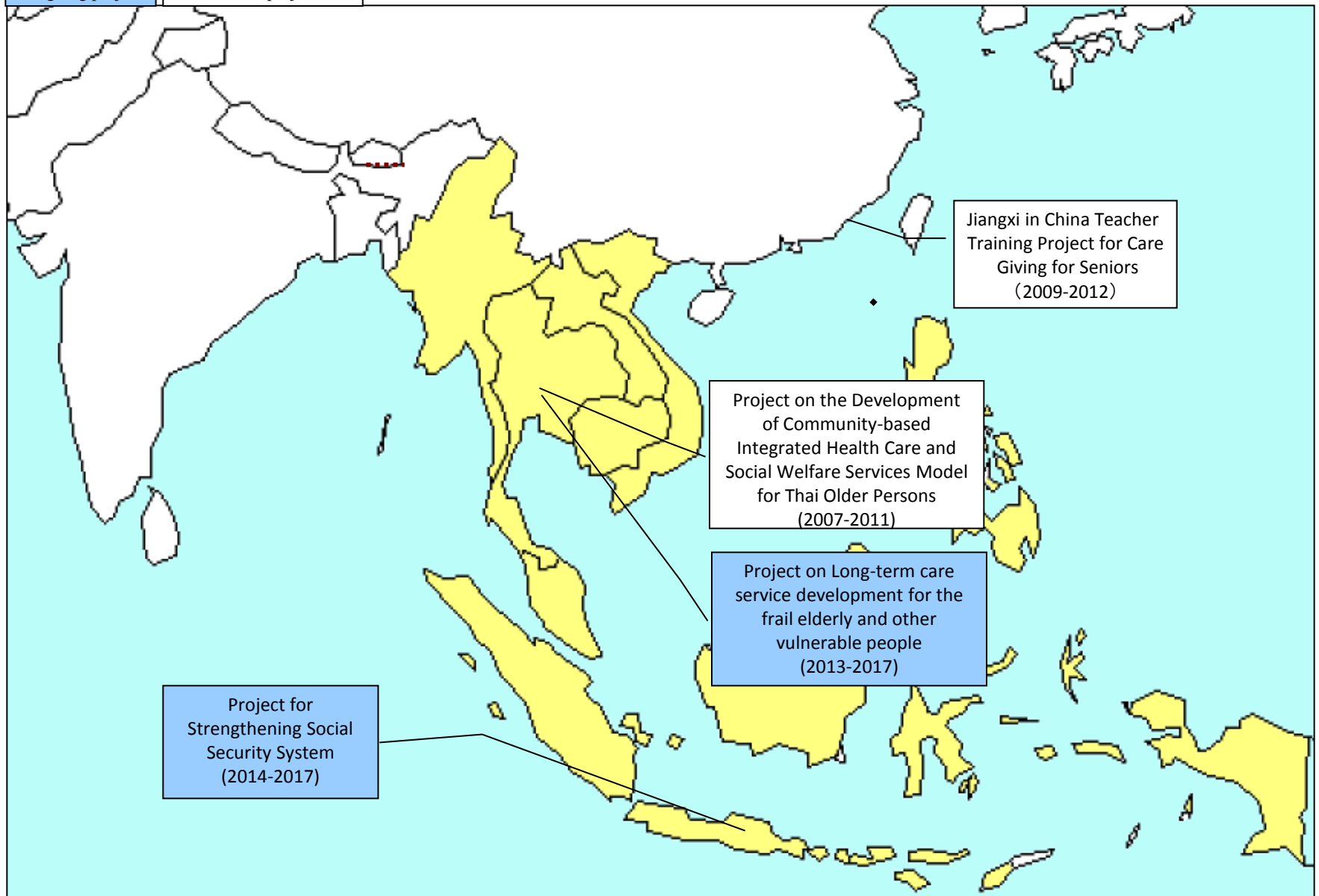
Responding to ageing society in Asia: JICA's work and experience

**Yasuyo Okumoto
Office for Gender Equality and Poverty Reduction,
Japan International Cooperation Agency (JICA)
March, 2015**

JICA's projects for ageing Asia

On-going project

Finished projects



Ageing in Thailand

- One of the fastest ageing countries in Asia (22 years from 7%(2001)→14%(2023 exp.))
- As of 2013, sex ratio is 81 (81 males per 100 female)

Elderly Age Group	2010	2013	2020	2030	2040
Early (60-69years)	89.1	87.1	86.0	85.1	85.7
Mid (70-79 years)	79.0	78.6	78.6	77.3	76.1
Late (80+ years)	66.5	65.2	62.6	60.4	57.9
60 years or older	82.6	81.2	80.4	78.7	76.2

Source: Situation of the
Thai Elderly 2013, TGRI

Projects in Thailand

- **Project on the Development of Community-based Integrated Health Care and Social Welfare Services Model for Thai Older Persons (CTOP) Nov.2007-Nov.2011**
 - developing community-based integrated service model for elderly people
- **Project of Long-term Care Service Development for the Frail Elderly and other Vulnerable People (LTOP) Jan.2013-Aug.2017**
 - developing policy recommendation for the future long-term care service model for bed-ridden elderly

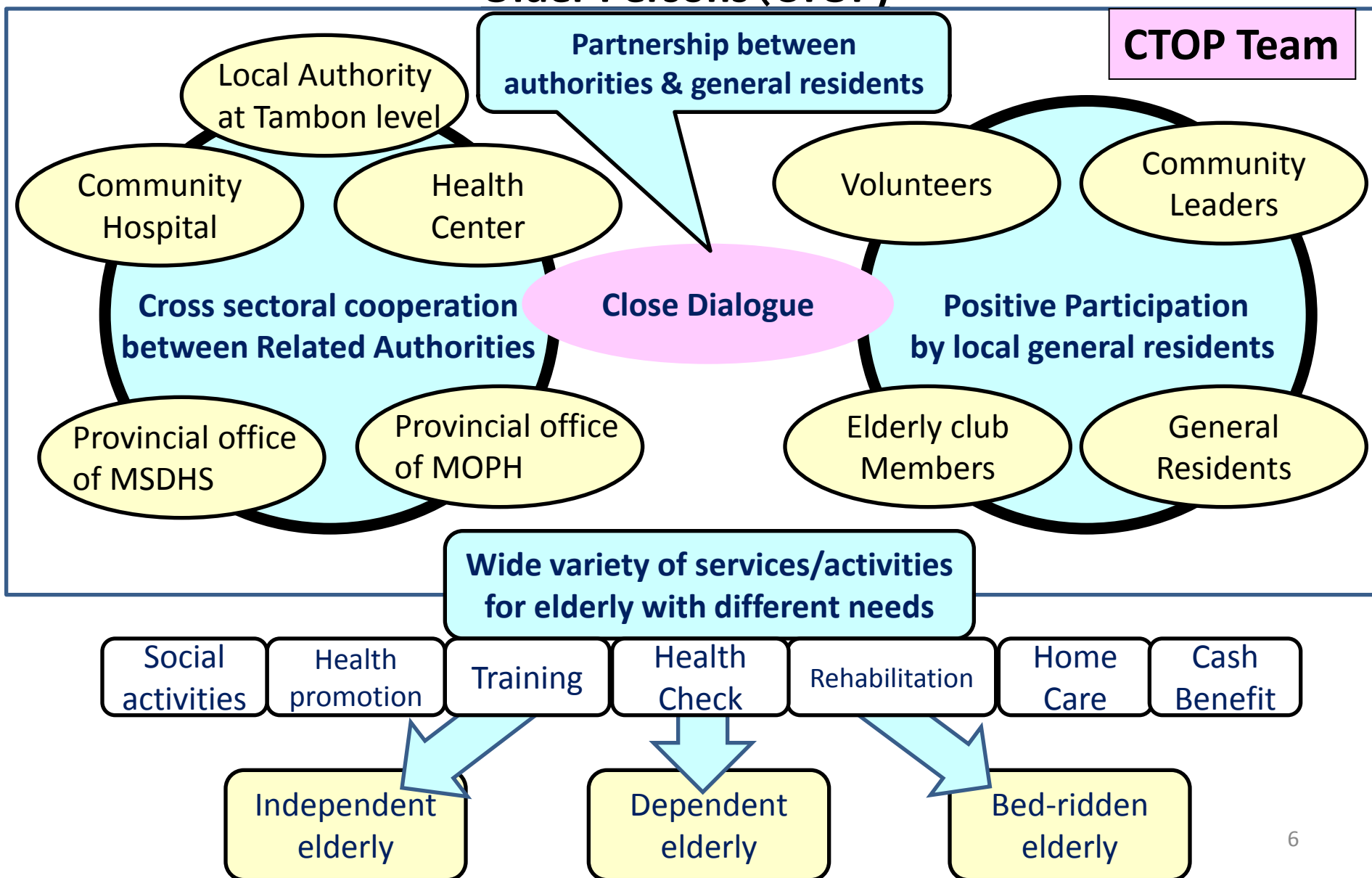
① Project on the Development of a Community Based Integrated Health Care and Social Welfare Services Model for Older Persons (CTOP)

“Integrated service model” of CTOP

- Involvement of different authorities which cover different domains such as health, social welfare, etc. (Multi-Agency involvement & Cross Sectoral Target)
- Partnership at community between related authorities & local general residents, based on strong local ownership
- Wide variety of services and supports for elderly with different needs (= services & activities for independent/ dependent / bed-ridden elderly)

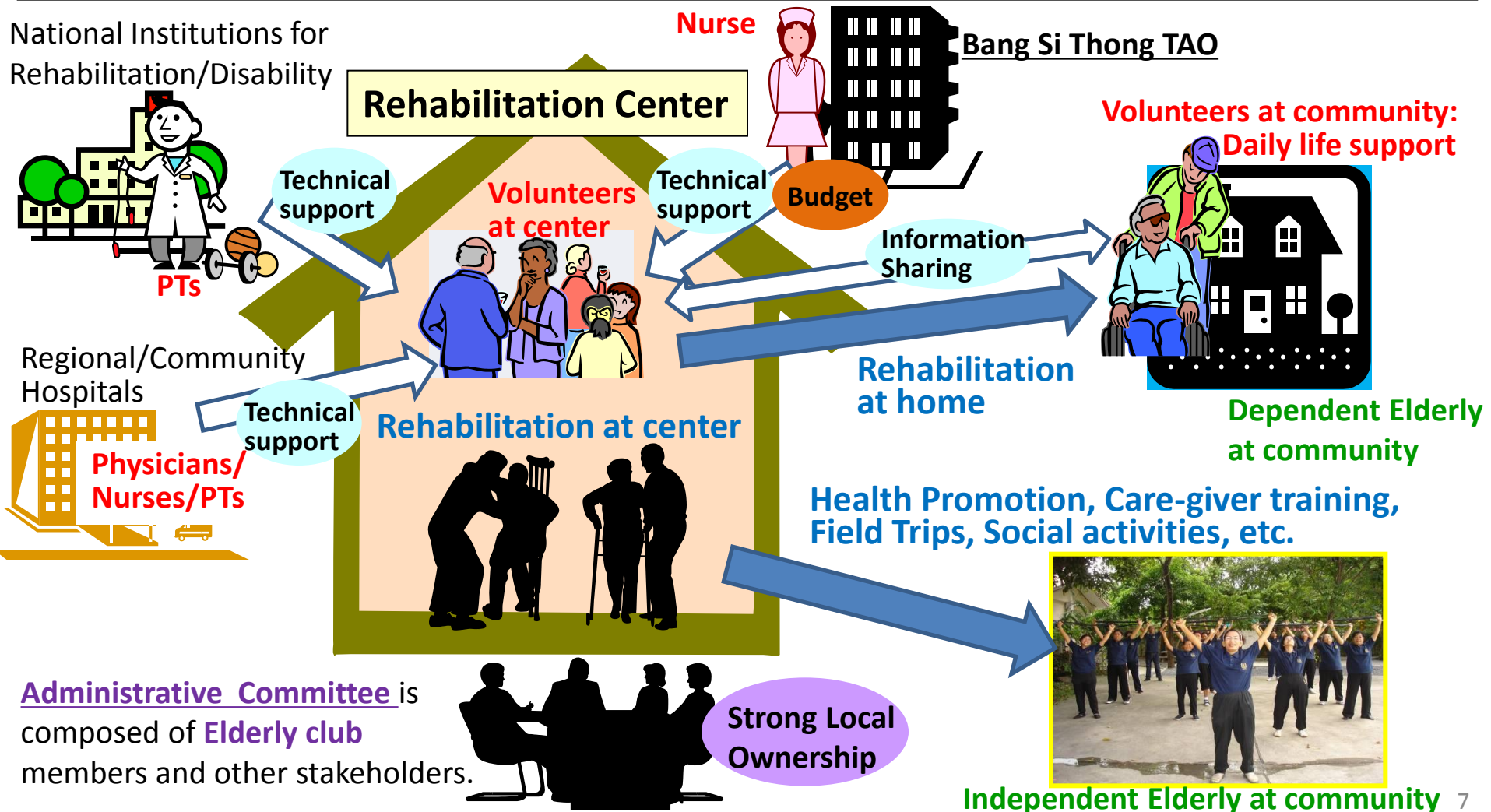


① Project on the Development of a Community Based Integrated Health Care and Social Welfare Services Model for Older Persons (CTOP)



Bang si thong (NT): TAO owned Rehabilitation Center

Rehabilitation center is a kind of multi-purpose center which provides **various services** for **elderly with different needs & conditions**. **Volunteer workers** at the center are technically **supported by a network of high skill professions**. Center is operated by **Administrative Committee where elderly club members play important roles**, that's why the operation of the center is based on **real local ownership**.



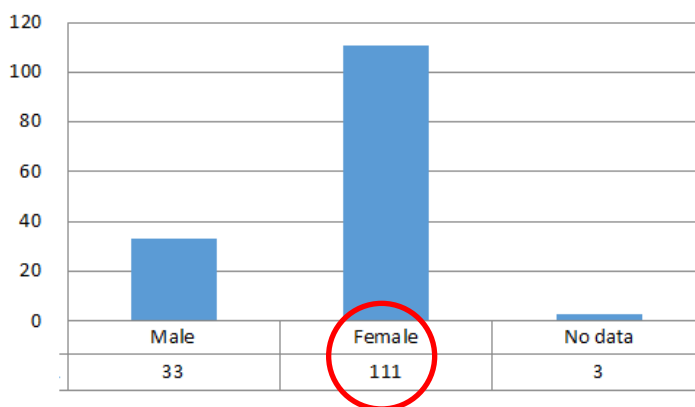
② Project of Long-term Care Service Development for the Frail Elderly and other Vulnerable People (LTOP)

- Outcome expected
 - Results from 6 piloted provinces will guide Thai policy makers on aged care
 - “the Service Model” developed and utilised effectively and sustainably
 - Development of Programs for the elderly and their care coordinators & care workers

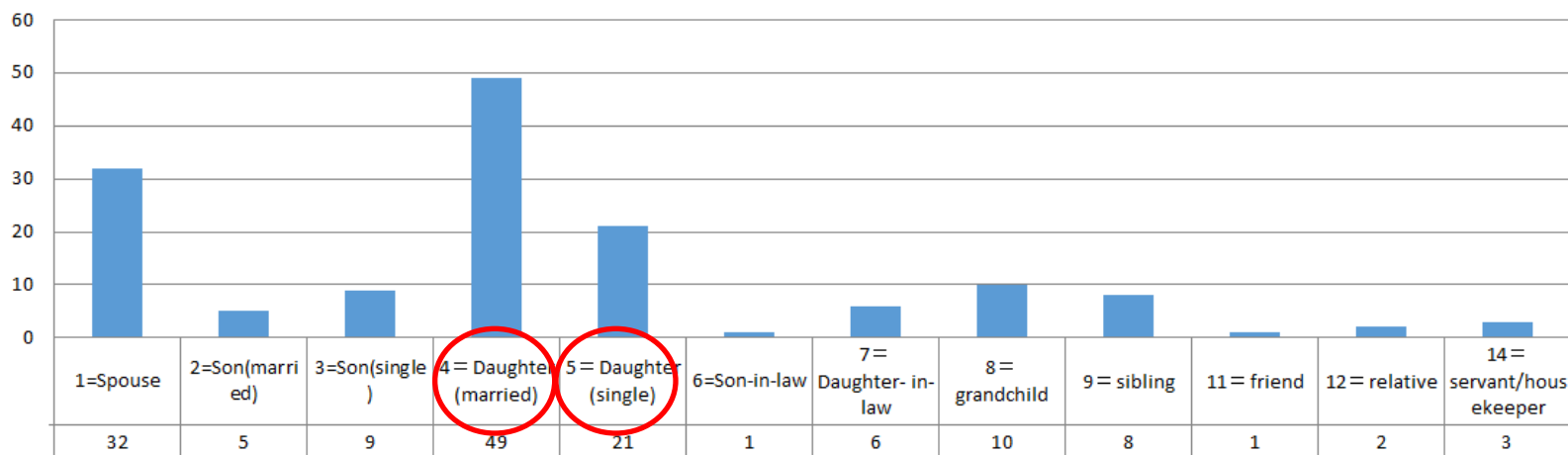


② Project of Long-term Care Service Development for the Frail Elderly and other Vulnerable People (LTOP)

Gender of care givers (no.)



Relation with Elderly (no.)



Source :
LTOP caregivers' baseline survey,
LTOP Project Team, 2014

Effects of projects from Gender Perspective

“Integrated service model” (CTOP)

- provide opportunities for elderly men/women to “participate” as community service provider
- strengthen network in the community for elderly men/women especially living alone by receiving various kinds of services
- promote “community based care” instead of “home based care” which tend to be on women’s burden

“Long-term service model for Frail elderly” (LTOP)

- would provide quality service for elderly women
- would reduce burden of the female family members, especially daughters